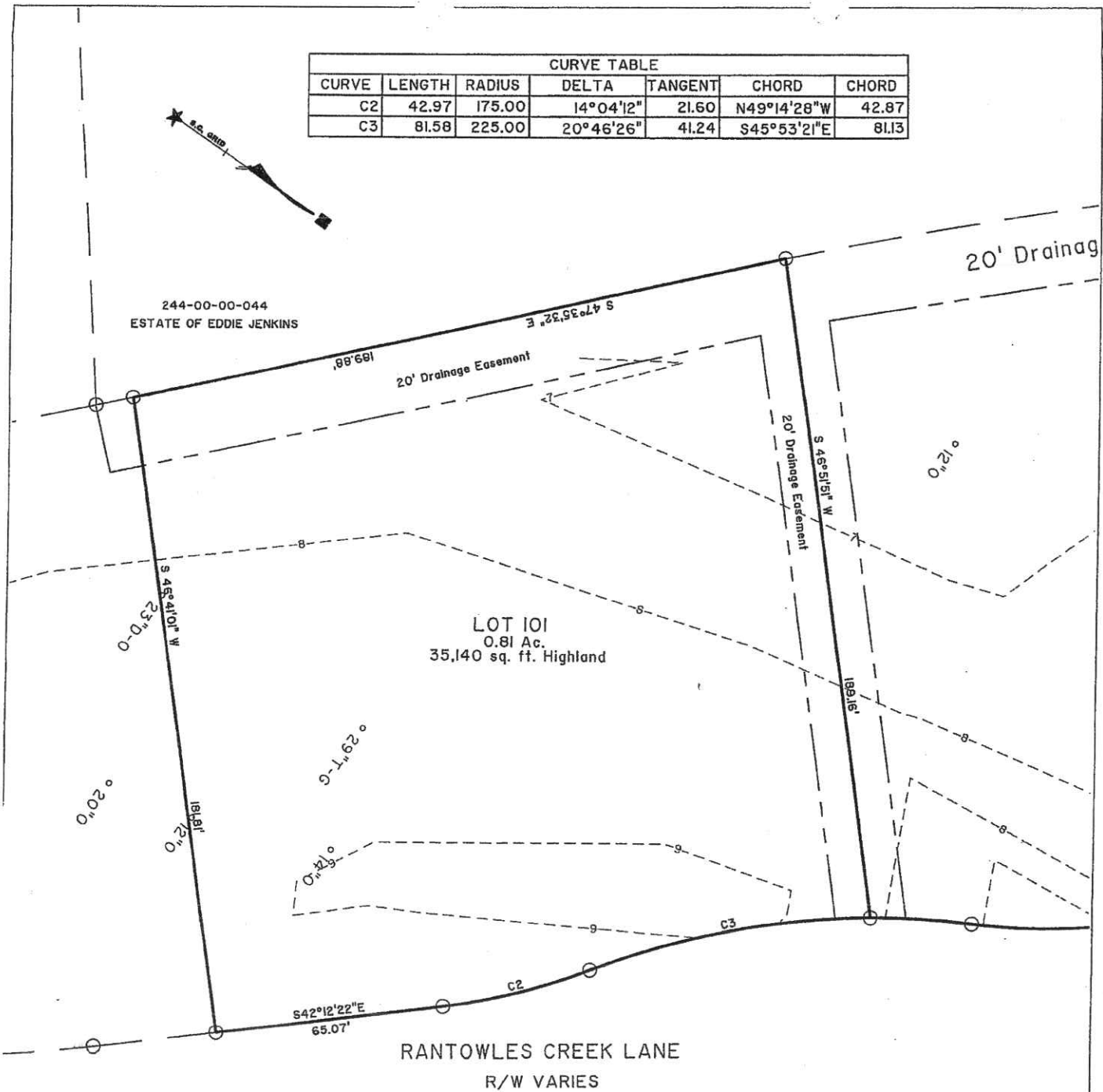


CURVE TABLE						
CURVE	LENGTH	RADIUS	DELTA	TANGENT	CHORD	CHORD
C2	42.97	175.00	14°04'12"	21.60	N49°14'28"W	42.87
C3	81.58	225.00	20°46'26"	41.24	S45°53'21"E	81.13



**LEGEND:**

- DENOTES IRON PIN (5/8" Rod)
- OCRM CRITICAL LINE
- OCRM CRITICAL LINE BUFFER

**REFERENCES:**

- 1.) TMS No. 242-00-00-031  
 PLAT BY THOMAS & HUTTON ENGINEERING CO.  
 DATED MAY 2, 2005  
 NOT RECORDED AT THIS TIME

**SITE PLAN OF  
 LOT 101, PHASE 1B  
 POPLAR GROVE  
 TOWN OF HOLLYWOOD  
 CHARLESTON COUNTY  
 SOUTH CAROLINA**

PREPARED FOR:  
 POPLAR GROVE PARTNERS, LLC