

2. CONTRACTOR TO COORD. W/ BUILDING'S FIRE ALARM COMPANY FOR ALTERATIONS TO EXISTING FIRE ALARM SYSTEM AS REQUIRED.
3. PROVIDE NEW BATT OR SPRAY INSULATION AT EXTERIOR WALLS AS REQUIRED.
4. CONTRACTOR TO COORD. WITH E-LIFE SPACES FOR AUDIO VISUAL REQUIREMENTS PRIOR TO GWB INSTALLATION.

Revision	DATE	BY
1	7/21/05	DL
2		AS
3		AS
4	9/27/05	DL



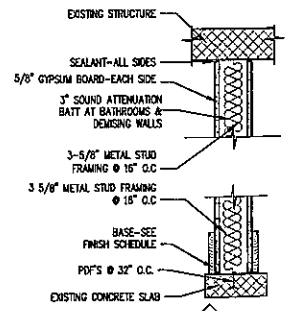
RENOVATION FOR NEAL & ELIZABETH BAKER
PEOPLES BUILDING - 7th FLOOR
16 BROAD STREET
CHARLESTON, SOUTH CAROLINA 29401

Glick/Boehm & Associates, Inc. Architecture/Planning/Interior Design
 403 King Street Suite 100 Charleston, SC 29403

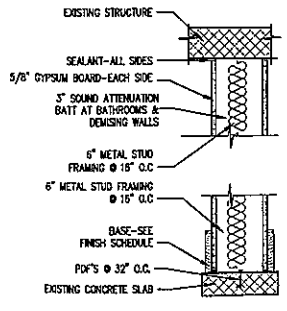
1 NEW FLOOR PLAN
 SCALE: 1/4"=1'-0"

NEW 3 1/2" KNEEWALL BELOW WINDOWS @ EAST ELEVATION

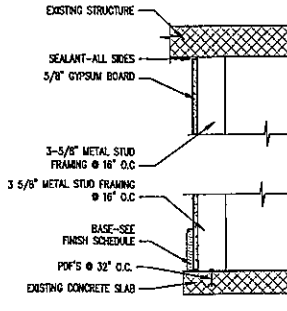
NO WORK IN CONTRACT BEYOND THIS LINE



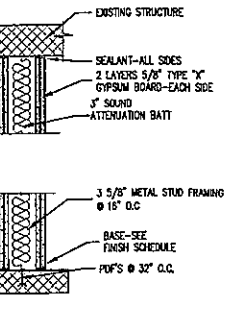
WALL TYPE A 1 HOUR RATED
 UL #410
 SCALE: 1-1/2"= 1'-0"



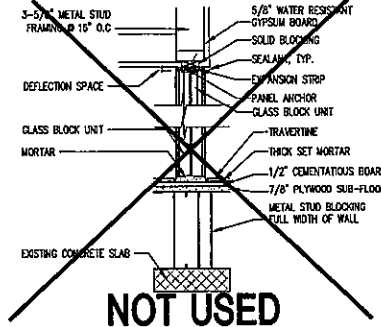
WALL TYPE B 1 HOUR RATED
 UL #411
 SCALE: 1-1/2"= 1'-0"



WALL TYPE D 1 HOUR RATED
 UL #411
 SCALE: 1-1/2"= 1'-0"



WALL TYPE E 1 HOUR RATED
 UL #411
 SCALE: 1-1/2"= 1'-0"



LEGEND

	EXISTING WALL CONSTRUCTION TO REMAIN
	EXISTING WINDOW UNIT TO REMAIN
	NEW WALL CONSTRUCTION
	NEW DOOR & DOOR DESIGNATION SEE DOOR SCHEDULE, SHEET A501
	ROOM NAME & NUMBER SEE FINISH SCHEDULE, SHEET A501
	EXISTING STEEL BUILDING STRUCTURE
	WH WATER HEATER, SEE MECHANICAL DWGS.